

What's New

Sage Payroll version 9.9.6.2

Release Date:
08 April 2020

9.9.6.2 Changes

The following enhancements are being released:

MY: KWSP Employee Contribution Rate Update

Enhancement: Extend the Bank Account Code up to 30 digits

Useful Fixes

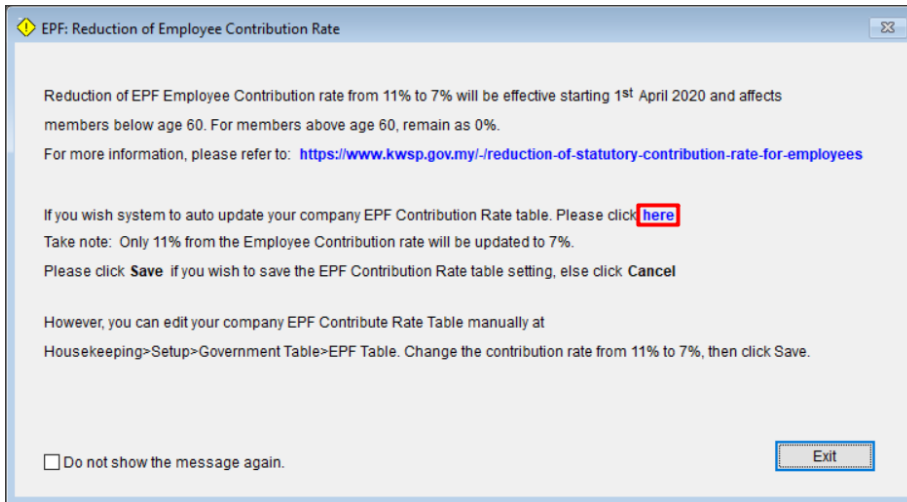
MY: KWSP Employee Contribution Rate Update

The Employees Provident Fund (EPF) reduced minimum statutory contribution rate for employees, from 11% to 7% and the rate will be effective starting 1st April 2020 until the end of the year. This new rate will only affect the members below age 60.

For more official information, please refer to: <https://www.kwsp.gov.my/-/reduction-of-employee-contribution-rate-1>

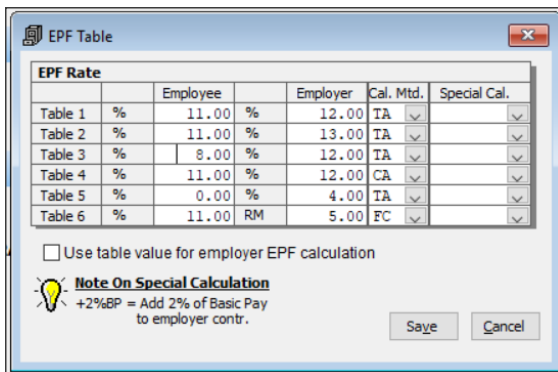
In the system, we had added the message box for you to choose if you wish system would help you to change the % or you can edit yourself in the system.

- a. If you wish system to edit the EPF Contribution Rate table for you. Please click:

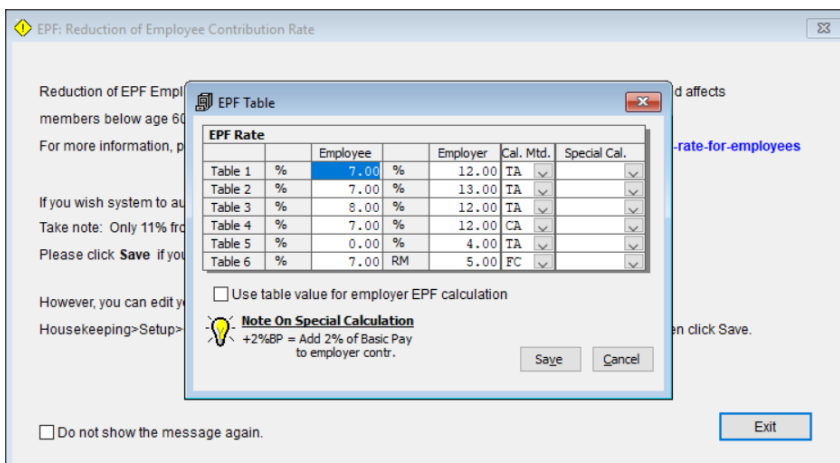


- b. System will prompt the EPF Contribution Rate Table in your company setting and change to 7% of Employee contribution rate for you. Take note that system will only update the Employee contribution amount which is 11% previously.

Take an example, your original EPF Contribution amount as below table:



So, when you click on the system update for EPF Contribution Rate Table, you will be expecting to see as below:



All the 11% from Employee contribution rate will update to 7%.

- c. Click **Save** once you done verify the % of the employee contribution rate.

EPF: Reduction of Employee Contribution Rate

Reduction of EPF Employee Contribution rate from 11% to 7% will be effective starting 1st April 2020 and affects members below age 60. For members above age 60, remain as 0%.

For more information, please refer to: <https://www.kwsp.gov.my/-reduction-of-statutory-contribution-rate-for-employees>

If you wish system to auto update your company EPF Contribution Rate table. Please click [here](#)

Take note: Only 11% from the Employee Contribution rate will be updated to 7%.

Please click **Save** if you wish to save the EPF Contribution Rate table setting, else click **Cancel**

However, you can edit your company EPF Contribute Rate Table manually at Housekeeping>Setup>Government Table>EPF Table. Change the contribution rate from 11% to 7%, then click Save.

Do not show the message again.

EPF Table

Table	Employee	Employer	Cal. Mtd.	Special Cal.
Table 1	7.00	12.00	TA	
Table 2	7.00	13.00	TA	
Table 3	8.00	12.00	TA	
Table 4	7.00	12.00	CA	
Table 5	0.00	4.00	TA	
Table 6	7.00	5.00	FC	

Use table value for employer EPF calculation

Note On Special Calculation
+2%BP = Add 2% of Basic Pay to employer contr.

Save **Cancel**

Exit

- d. Tick on the “Do not show the message again” box if you do not wish to show the message when you login to the company database. Else, it will always prompt when you login to your company database.

EPF: Reduction of Employee Contribution Rate

Reduction of EPF Employee Contribution rate from 11% to 7% will be effective starting 1st April 2020 and affects members below age 60. For members above age 60, remain as 0%.

For more information, please refer to: <https://www.kwsp.gov.my/-reduction-of-statutory-contribution-rate-for-employees>

If you wish system to auto update your company EPF Contribution Rate table. Please click [here](#)

Take note: Only 11% from the Employee Contribution rate will be updated to 7%.

Please click **Save** if you wish to save the EPF Contribution Rate table setting, else click **Cancel**

However, you can edit your company EPF Contribute Rate Table manually at Housekeeping>Setup>Government Table>EPF Table. Change the contribution rate from 11% to 7%, then click Save.

Do not show the message again.

Exit

- e. Click Exit once you done.
- f. If you wish to edit your EPF Contribution Table yourself, whenever you login to your company database, tick “Do not show the message again.” and click Exit.

Enhancement: Extend the Bank Account Code up to 30 digits

From this version and onwards, the bank account code is now updated from 20 digits to 30 digits. The affecting area:

Personnel

1. Personnel > Add/Update Employee > Govern. > Bank > Bank A/C No.

The screenshot shows the 'Personnel File Maintenance' window for Employee No. 003. The 'Bank - BANK' section is active, displaying the following fields:

- Bank Code: MABMYI
- MEPS:
- Branch Code:
- Bank A/C No.: 6215231243443291234912345 (highlighted in red)
- Category: 1
- Payment Mode:
- Bank IC: N

Other sections visible include:

- Insurance - SOCSO:** SOCSO No., Use I/C No. , Table: 1, SOCSO IC: N, Category: 1, SOCSO Initial: , Socso Relief
- Insurance - EIS:** Category: 1, Contribute to EIS
- EPF:** EPF No., NK: , Table: 3, EPF IC: N, Category: 1, EPF (Yee) Formula: , EPF (Yer) Formula:
- TAX:** Branch: , KI: , Tax No.: , Category: 1, Tax type: RS

At the bottom, there are navigation buttons: Scan From MyKad, Add, Delete, Save, and Exit.

Payments

1. 1st Half Payroll > Thru Bank Via Diskette > Originator Company > Account No. (Bank A/C No.)
2. 2nd Half Payroll > Thru Bank Via Diskette > Originator Company > Account No. (Bank A/C No.)
3. Bonus > Thru Bank Via Diskette > Originator Company > Account No. (Bank A/C No.)
4. Commission > Thru Bank Via Diskette > Originator Company > Account No. (Bank A/C No.)
5. Extra > Thru Bank Via Diskette > Originator Company > Account No. (Bank A/C No.)
6. 2nd Half Payroll + Bonus + Commission + Extra > Thru Bank Via Diskette > Originator Company > Account No. (Bank A/C No.)

Housekeeping > Setup > Addresses & Account No.

1. Bank > Your Company Registered Information > Account No.
2. EPF > Your Company Registered Information > EPF Bank Account No.
3. Socso > Your Company Registered Information > Socso Bank Account No.
4. TAX > Your Company Registered Information > PCB Bank Account No.
5. EIS > Your Company Registered Information > EIS Bank Account No.

Useful Fixes

Below is the fixes detail that done in this version:

No	Case ID	Solution Area	Brief Description
1	SAP – 1500	E-Payslip	<p>Payslip Z alignment of EIS Information</p> <p>Issue:</p> <ul style="list-style-type: none"> - The alignment is incorrect for EIS Employee and employer contribution amount in Payslip Z after sending the pdf format to the employee. <p>Resolved:</p> <ul style="list-style-type: none"> - Issue is now fixed. Payslip Z EIS information alignment is now fixed in pdf format for E-Payslip.
2	SAP – 1767	EPF Report	<p>Unable to generate correct amount in Imajikan EPF CSV format</p> <p>Issue:</p> <ul style="list-style-type: none"> - System will prompt error message if the EPF contribution amount is more than 5 digits while generating the Imajikan EPF CSV Format. <p>Resolved:</p> <ul style="list-style-type: none"> - Issue is now fixed. Imajikan EPF CSV format is now able to generate without error message if the EPF Contribution amount is more than 5 digits.
3	SAP-1971	EPF Report	<p>Generated duplicate employee in Imajikan EPF CSV Format</p> <p>Issue:</p> <ul style="list-style-type: none"> - System generated duplicate employee no. in Imajikan EPF CSV Format due to the employee no issue. <p>Resolved:</p> <ul style="list-style-type: none"> - Issue is now fixed. System is now able to generate correct employee sequence in Imajikan EPF CSV format according to the personal file maintenance data.
4	SAP-2039	LHDN – EA Form	<p>BIK Item located wrongly in EA Form > Update screen</p> <p>Issue:</p> <ul style="list-style-type: none"> - BIK016 is located wrongly column of Update EA Form Screen and BIK015 do not show in the Update EA Form Screen. <p>Resolved:</p> <ul style="list-style-type: none"> - Issue is now fixed. Both BIK Item is now showing correctly in their respective column in Update EA Form Screen and EA form.
5	SAP-1811	Report	<p>Exempted Tax Allowance amount does not show in the report</p> <p>Issue:</p> <ul style="list-style-type: none"> - TR0023 Allowance or Subsidies for Childcare amount is not showing in the Exempted Tax for Allowance in the Year Report template. <p>Resolved:</p> <ul style="list-style-type: none"> - Issue is now fixed. The exempted tax allowance amount is now showing in the report.

No	Case ID	Solution Area	Brief Description
6	SAP – 1875	LHDN – CP8C	<p>Gratuity amount is not showing in CP8C</p> <p>Issue:</p> <ul style="list-style-type: none">- The gratuity amount is not showing in CP8C after generated. <p>Resolved:</p> <ul style="list-style-type: none">- Issue is now fixed. Gratuity amount is now able to show in CP8C after generated report.
7	SAP – 1562	OCBC - LHDN	<p>APS 79 Wife Code show as 0 in the text file</p> <p>Issue:</p> <ul style="list-style-type: none">- OCBC LHDN APS 79 wife code always show as 0 even for married women. <p>Resolved:</p> <ul style="list-style-type: none">- Issue is now fixed. Wife code in APS79 will show the correct code in the text file. If you want to change the wife code, please amend the code at Personnel File Maintenance → Govern. → Tax → KI field.

***** End *****