

Access UBS Payroll

8 September 2022 Release Notes



About these Release Notes

Welcome to the Access UBS Payroll Release Notes!

This document outlines all you need to know about this version of the software, it will provide you with a summary of the changes, and by using the hyperlinks you will be able to easily navigate through the document to find out detailed information about the new features, including screenshots and videos where appropriate.

Please refer to the table of contents for a full list of what is included.

About Access UBS Payroll

Access UBS Payroll gives you complete control and visibility over your payroll, securely storing your employee records and payroll information, with a range of constantly updated government reports and a variety of bank formats to keep you compliant to legislative changes and your payroll accurate.

Table of Contents

Release Summary	4
Release Contents.....	5
Update on SOCSO Contribution Rate	5
Update on EIS Contribution Rate.....	6
Update on Foreign Worker Levy.....	7
Security Upgrade	7
How to Contact Us.....	8

Release Summary

Access UBS Payroll v2022.7

This release encompasses our efforts to ensure our product complies with the government statutory policy and up-to-date security measurements.

Important Note:

- You might need to disable your Anti-virus before you install the new update as some Anti-virus can interfere and prevent a successful installation.
- After successfully installed the update (whether via Online Update or using the Installer), you must restart your computer for the configuration changes to take effect.

The following major features are included in this release, please select the appropriate links if you would like more details on the features. The features are grouped by Product/Area to help you find the information you need easily.

Malaysia Statutory Update

Update on SOCSO Employee Contribution Rate

Updated the SOCSO Contribution Rate specifically for salary from RM 4000 and onwards.

[Read more about this feature](#)

Update on EIS Employee Contribution Rate

Updated the EIS Contribution Rate specifically for salary from RM 4000 and onwards.

[Read more about this feature](#)

Singapore Statutory Update

Update on Foreign Worker Levy

Updated reference note of Foreign Worker Levy table.

[Read more about this feature](#)

Security

Security Upgrade

Enhanced the security of the UBS Software systems to ensure a proficient and hassle-free customer experience.

[Read more about this feature](#)



Release Contents

The below section describes the features in more detail, including screenshots and videos where appropriate, this is ordered by the products/modules identified in Release Summary section.

Malaysia Statutory Update

Update on SOCSO Contribution Rate

As per gazetted in Act A1658 Employee's Social Security (Amendment) Act 2022 (<https://lom.agc.gov.my/act-detail.php?language=BI&type=amendment&act=A1658>), the salary ceiling of the insured has been increased from RM4,000 to RM5,000 to improve social security coverage for 9 million workers covered by SOCSO.

SOCSO Contribution Rate in Housekeeping>Setup>Government Tables>SOCSO Table has been updated to the latest Contribution Rate gazetted in Perkeso Board website (<https://www.perkeso.gov.my/en/rate-of-contribution.html>) with effective from September 2022 salary onwards.

Pay From	Pay To	Employee	Employer
3300.01	3400.00	16.75	58.65
3400.01	3500.00	17.25	60.35
3500.01	3600.00	17.75	62.15
3600.01	3700.00	18.25	63.85
3700.01	3800.00	18.75	65.65
3800.01	3900.00	19.25	67.35
3900.01	4000.00	19.75	69.15
4000.01	4100.00	20.25	70.85
4100.01	4200.00	20.75	72.65
4200.01	4300.00	21.25	74.35
4300.01	4400.00	21.75	76.15
4400.01	4500.00	22.25	77.85
4500.01	4600.00	22.75	79.65
4600.01	4700.00	23.25	81.35
4700.01	4800.00	23.75	83.15
4800.01	4900.00	24.25	84.85
4900.01	5000.00	24.75	86.65
5000.01	9999999.99	24.75	86.65

Table: 1 Accidence & Disable

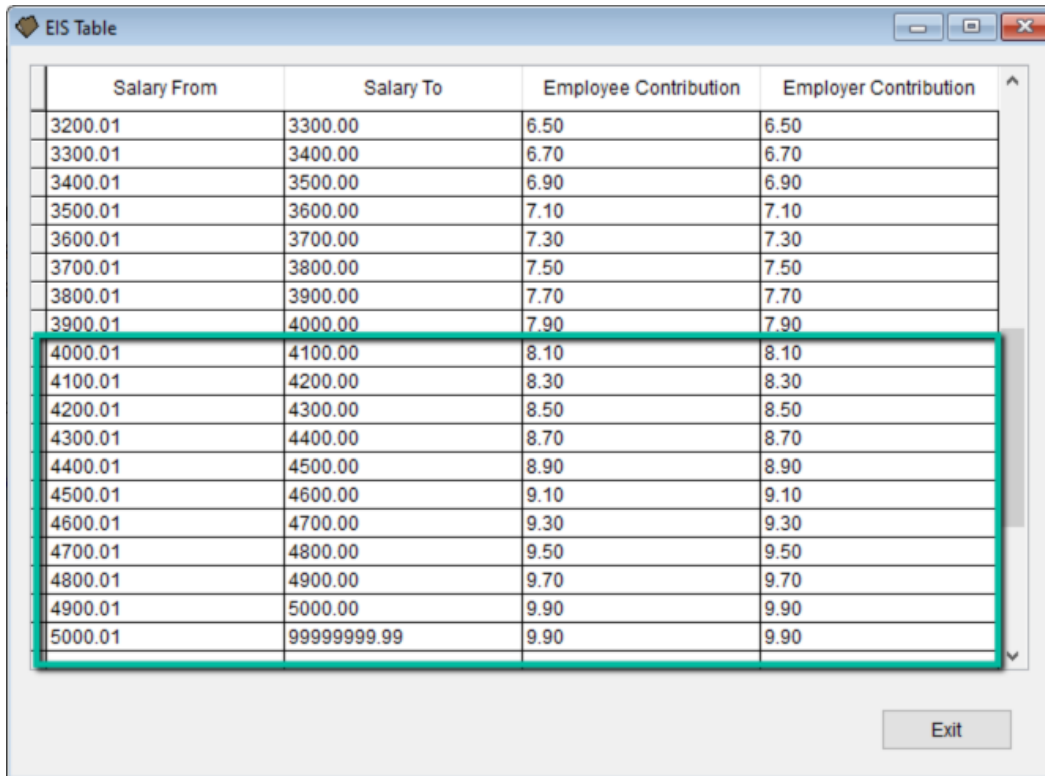
Pay From	Pay To	Employee	Employer
3300.01	3400.00	0.00	41.90
3400.01	3500.00	0.00	43.10
3500.01	3600.00	0.00	44.40
3600.01	3700.00	0.00	45.60
3700.01	3800.00	0.00	46.90
3800.01	3900.00	0.00	48.10
3900.01	4000.00	0.00	49.40
4000.01	4100.00	0.00	50.60
4100.01	4200.00	0.00	51.90
4200.01	4300.00	0.00	53.10
4300.01	4400.00	0.00	54.40
4400.01	4500.00	0.00	55.60
4500.01	4600.00	0.00	56.90
4600.01	4700.00	0.00	58.10
4700.01	4800.00	0.00	59.40
4800.01	4900.00	0.00	60.60
4900.01	5000.00	0.00	61.90
5000.01	9999999.99	0.00	61.90

Table: 3 Accidence Only

Update on EIS Contribution Rate

As per gazetted in Act A1657 Employment Insurance System (Amendment) Act 2022 (<https://lom.agc.gov.my/act-detail.php?language=BI&type=amendment&act=A1657>), the salary ceiling of the insured has been increased from RM4,000 to RM5,000 to improve employment insurance coverage for workers covered by EIS.

EIS Contribution Rate in Housekeeping>Setup>Government Tables>EIS Table has been updated to the latest Contribution Rate gazetted in Perkeso Board website (<https://www.perkeso.gov.my/en/rate-of-contribution.html>) with effective from September 2022 salary onwards.



Salary From	Salary To	Employee Contribution	Employer Contribution
3200.01	3300.00	6.50	6.50
3300.01	3400.00	6.70	6.70
3400.01	3500.00	6.90	6.90
3500.01	3600.00	7.10	7.10
3600.01	3700.00	7.30	7.30
3700.01	3800.00	7.50	7.50
3800.01	3900.00	7.70	7.70
3900.01	4000.00	7.90	7.90
4000.01	4100.00	8.10	8.10
4100.01	4200.00	8.30	8.30
4200.01	4300.00	8.50	8.50
4300.01	4400.00	8.70	8.70
4400.01	4500.00	8.90	8.90
4500.01	4600.00	9.10	9.10
4600.01	4700.00	9.30	9.30
4700.01	4800.00	9.50	9.50
4800.01	4900.00	9.70	9.70
4900.01	5000.00	9.90	9.90
5000.01	9999999.99	9.90	9.90

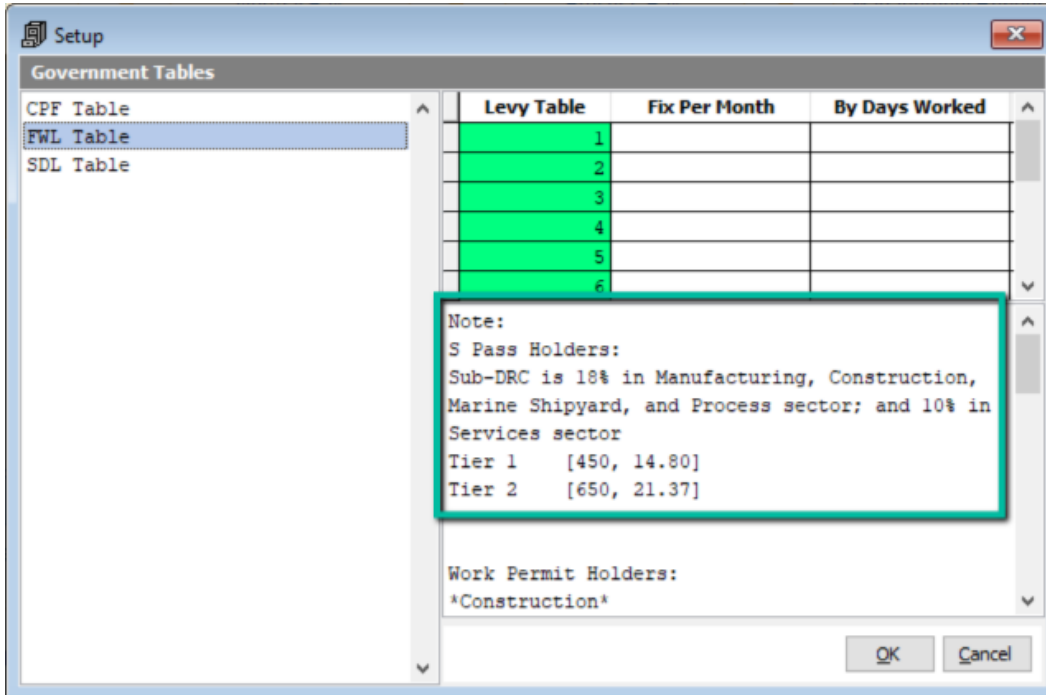
Singapore Statutory Update

Update on Foreign Worker Levy

As per stated in Singapore Foreign Workforce Policy Announcement

<https://www.mof.gov.sg/docs/librariesprovider3/budget2022/download/pdf/annexc4.pdf> , the Tier 1 S Pass Foreign Worker Levy (FWL) rate has been raised from \$330 to \$450 with effective from 1 September 2022.

The reference note below the Housekeeping>Setup>Government Tables>FWL Table has been updated to show the latest levy rate between 1 September 2022 and 31 December 2022.



Security

Security Upgrade

The system security has been updated to improve product proficiency and hassle-free customer experience. This is part of the on-going rebranding exercise being released for our customers.

IMPORTANT INFORMATION

Please take note that you would be at risk if running on out-of-support (or soon to be) Windows operating system.

For those using Windows 7, the end of extended support for Microsoft Windows 7 was on 14 January 2020.

For those using Windows 8.1, do note that the end of extended support will be on 10 January 2023.

And, if you are on Windows Server 2012 R2, the end of extended support will be on 10 October 2023.

What does this mean to you?

If you are still running on an out-of-support Windows, technical assistance and software updates from Windows Update that help protect your PC will no longer be available. And we will not be able to help if you encounter issues using our solutions on an out-of-support Windows.

Microsoft strongly recommends that you always stay updated with the current Windows OS for stronger security, access to support, and the ability to work with newer programs efficiently.

Thus, it is always wise to upgrade the Operating System ahead of time to avoid disruption to your business.

If you are unsure on what you need to do, please speak to your Access Business Partner who will be able to assist and advise you.

How to Contact Us

The Release Summary and Contents are also available from the Access Support Community

<https://download.my.accesscloud.com/>

For further information related to this release or how to upgrade please use the following contacts:

Your Account Manager or Customer Success Manager

Support department

- Email
 - APAC.support.my@theaccessgroup.com (UBS Customer Inquiry) – Product UBS Accounting and Billing, Inventory and Billing, UBS Payroll, UBS POS, and UBS BSM
 - APAC.Channel.SupportMY@theaccessgroup.com (UBS Partner Inquiry) – Product UBS Accounting and Billing, Inventory and Billing, UBS Payroll, UBS POS, and UBS BSM
- Tel
 - General Line Office: 1300 88 7243 | +603 2272 9999

General Website:

<https://www.theaccessgroup.com/en-my/>