

# What's New

## Sage 100 Evolution Migration Tool v1.0.0.3

Release Date:  
29<sup>th</sup> January 2018

### Supported Accounting Software

- Sage UBS
- Sage 50 MY

### V1.0.0.3 Updates

The following enhancement is being released:

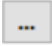
- **Data Migration from Remote PC**

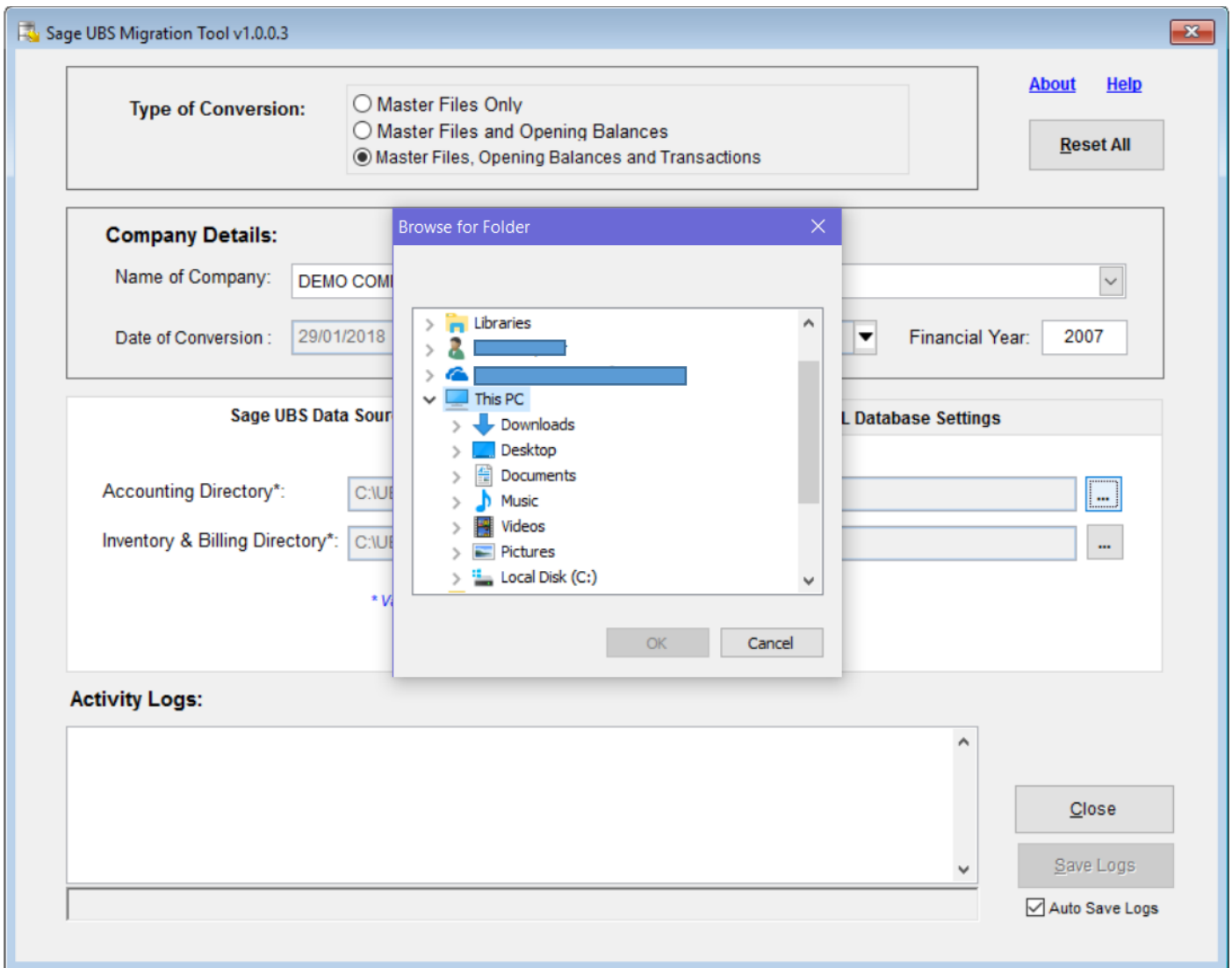
### Data Migration from Remote PC

Previously, Sage UBS data migration is only allowed from the source database defined in Sage UBS. It is not very user-friendly to users who have different source database in a network or in a remote PC.

Now, users will be able to perform migration using the source database in a network or in a remote PC.

#### How?

1. Login to Sage Migration Tool v1.0.0.3.
2. Select Migration for Sage UBS.
3. Fill in the SQL server information, then it will go to Sage UBS Migration Tool v1.0.0.3 screen.
4. Select Type of Conversion, fill in the Company Details and click on Sage UBS Data Source Directory.
5. Click on  icon to select the data source.



**Important Notes:**

1. Please make sure you have mapped the Network to your local PC.
2. Please be reminded that you need to have the access rights to the mapped network.

## Useful Fixes

No	Case ID	Solution Area	Brief Description
1	369-186010	Accounting report	<b>Issue:</b> UBS data is not distributed in 100 Evo <b>Solution:</b> Make sure Closing Stock is distributed after migration has completed.
2	369-186188	Maintenance	<b>Issue:</b> Group Maintenance from I&B not migrate <b>Solution:</b> <ol style="list-style-type: none"><li>1. Ensure the missing Sales GL Account are migrated correctly.</li><li>2. Ensure Inventory Item Group Purchase Account are migrated correctly.</li><li>3. Ensure Major Industry Codes are migrated correctly.</li></ol>
3	392-183757	Import/Export	<b>Issue:</b> Unbalance amount between Sage 50 & Evo <b>Solution:</b> Fixed the unbalance Receivables, Payables, and Retained Earnings account after Sage 50 has been migrated to Sage Evo.
4	392-183758	Import/Export	<b>Issue:</b> Unbalance amount between Sage UBS & Evo <b>Solution:</b> Fixed the unbalance Receivables, Payables, and Retained Earnings account after Sage UBS has been migrated to Sage Evo.
5	392-186974	Import/Export	<b>Issue:</b> GL Suspense inside TB in Sage Evo <b>Solution:</b> Removed GL Suspense account in Trial Balance.

\*\*\*\*\* End \*\*\*\*\*